

	Producer	Armanni Carrelli Elevatori Srl								
	Model	DELTA E AC-evo 125/16	DELTA E AC-evo 155/16	DELTA E AC-evo 125/25	DELTA E AC-evo 155/25	DELTA E AC-evo 125/30	DELTA E AC-evo 155/30	DELTA E AC-evo 125/35	DELTA E AC-evo 155/35	
	Drive	electric		electric		electric		electric		
	Operator Type	pedestrian		pedestrian		pedestrian		pedestrian		
	Load Capacity	Kg	1200	1500	1200	1500	1200	1500	1200	1500
	Load centre distance	mm	600		600		600		600	
	Weight (battery excluded)	Kg	475	510	532	576	570	595	590	650

DELTA E AC-evo			125/16	155/16	125/25	155/25	125/30	155/30	125/35	155/35
BASIC DIMENSIONS	Outer width of legs	E mm	485	485	485	485	485	485	485	485
	Inner width of legs	F mm	255	255	255	255	255	255	255	255
	Fork dimensions	s/N/l mm	65 / 160 / 1150		65 / 160 / 1150		65 / 160 / 1150		65 / 160 / 1150	
	Distance between fork-arms	M mm	530	530	530	530	530	530	530	530
	Overall width	B mm	840	840	840	840	840	840	1000	1000
	Overall length	L mm	1880	1880	1915	1915	1915	1915	1915	1915
	Length to face of forks	L2 mm	730	730	765	785	765	785	765	785
	Distance from front half axle	X mm	375	375	410	410	410	410	410	410
		X2 mm	175	175	175	175	175	175	175	175
	Closed mast height	h1 mm	1990	1990	1740	1740	1990	1990	2240	2240
	Free lift	h2 mm	1450	1450	200	200	200	200	-	-
	Lift	h3 mm	1600	1600	2500	2500	3000	3000	3500	3500
	Height, mast extended	h4 mm	2120	2120	3020	3020	3520	3520	4020	4020
	Height of tiller in drive position (min/max)	h14 mm	1440/895		1440/895		1440/895		1440/895	
	Height, lowered	h13 mm	90		90		90		90	
	Aisle width*	J mm	2080	2080	2115	2115	2115	2115	2115	2115
Turning radius	WA mm	1500	1520	1530	1550	1530	1550	1530	1550	
PERFORMANCES	Travel speed, with/without load	Km/h	5.0 / 5.5		5.0 / 5.5		5.0 / 5.5		5.0 / 5.5	
	Lift speed, with/without load	m/sec	0.1 / 0.18	0.08/0.12	0.1 / 0.18	0.08/0.12	0.1 / 0.18	0.08/0.12	0.1 / 0.18	0.08/0.12
	Lowering speed, with/without load	m/sec	0.1/0.12	0.08/0.09	0.1/0.12	0.08/0.09	0.1/0.12	0.08/0.09	0.1/0.12	0.08/0.09
	Max. gradeability, with/without load	%	5% / 10%		5% / 10%		5% / 10%		5% / 10%	
	Service brake		electric		electric		electric		electric	
WHEELS, CHASSIS	Drive/castor/fork wheel		rubber/polyurethane/polyurethane							
	Wheels, n° front/rear (x=driven wheels)		1x+2 / 4		1x+2 / 4		1x+2 / 4		1x+2 / 4	
	Drive Wheel size	mm	ø250x76		ø250x76		ø250x76		ø250x76	
	Stabilising wheels	mm	ø125x50		ø125x50		ø125x50		ø125x50	
	Rollers at the leg	mm	ø80x70		ø80x70		ø80x70		ø80x70	
	Wheelbase	Y mm	1330	1330	1330	1330	1330	1330	1330	1330
	Track width, front	B10 mm	700	700	700	700	700	700	860	860
	Track width, rear	B11 mm	370	370	370	370	370	370	370	370
	Ground clearance, with load, below mast	mm	30		30		30		30	
	Ground clearance, centre of wheelbase	mm	27		27		27		27	

ELECTRIC MOTOR	Drive motor	KW	1.2		1.2		1.2		1.2	
	Traction technology		AC technology		AC technology		AC technology		AC technology	
	Lift motor	KW	2.2		2.2		2.2		2.2	
	Battery voltage/nominal capacity (min.)	V / Ah	24 / 160	24 / 160	24 / 160	24 / 160	24 / 160	24 / 160	24 / 160	24 / 160
	Battery weight (min.)	Kg	150	150	150	150	150	150	150	150
	Battery charger voltage/nominal capacity	V / A	24 / 30	24 / 30	24 / 30	24 / 30	24 / 30	24 / 30	24 / 30	24 / 30
DELTA E AC-evo			125/16	155/16	125/25	155/25	125/30	155/30	125/35	155/35

* not including the space for the operator

** Armanni Carrelli Elevatori reserves the right to make changes to specifications and dimensions without advance notice. The data provided are subject to tolerances.

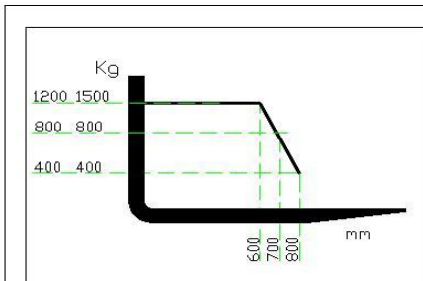
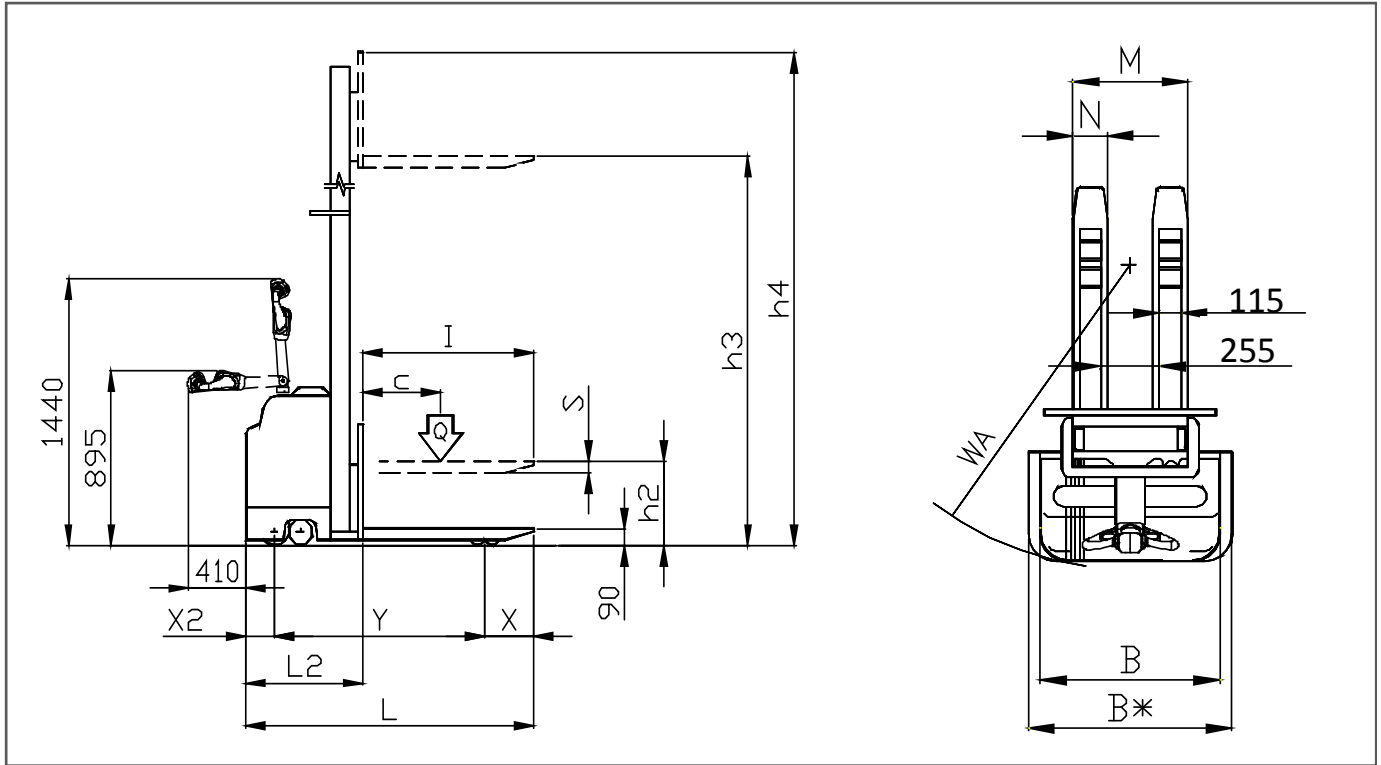


Diagram of maximum loads regarding the lifts.

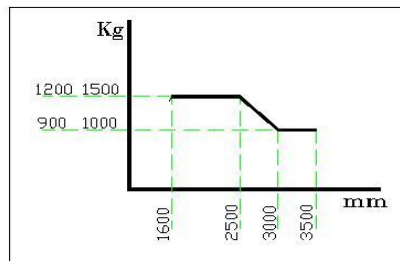
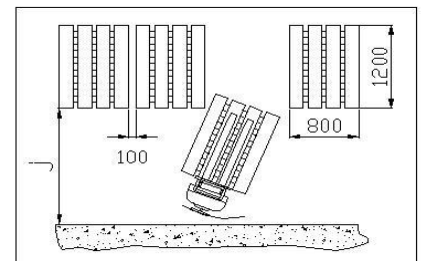


Diagram representing the position variation of the load barycenter with the variation of the same.



Storage corridor.